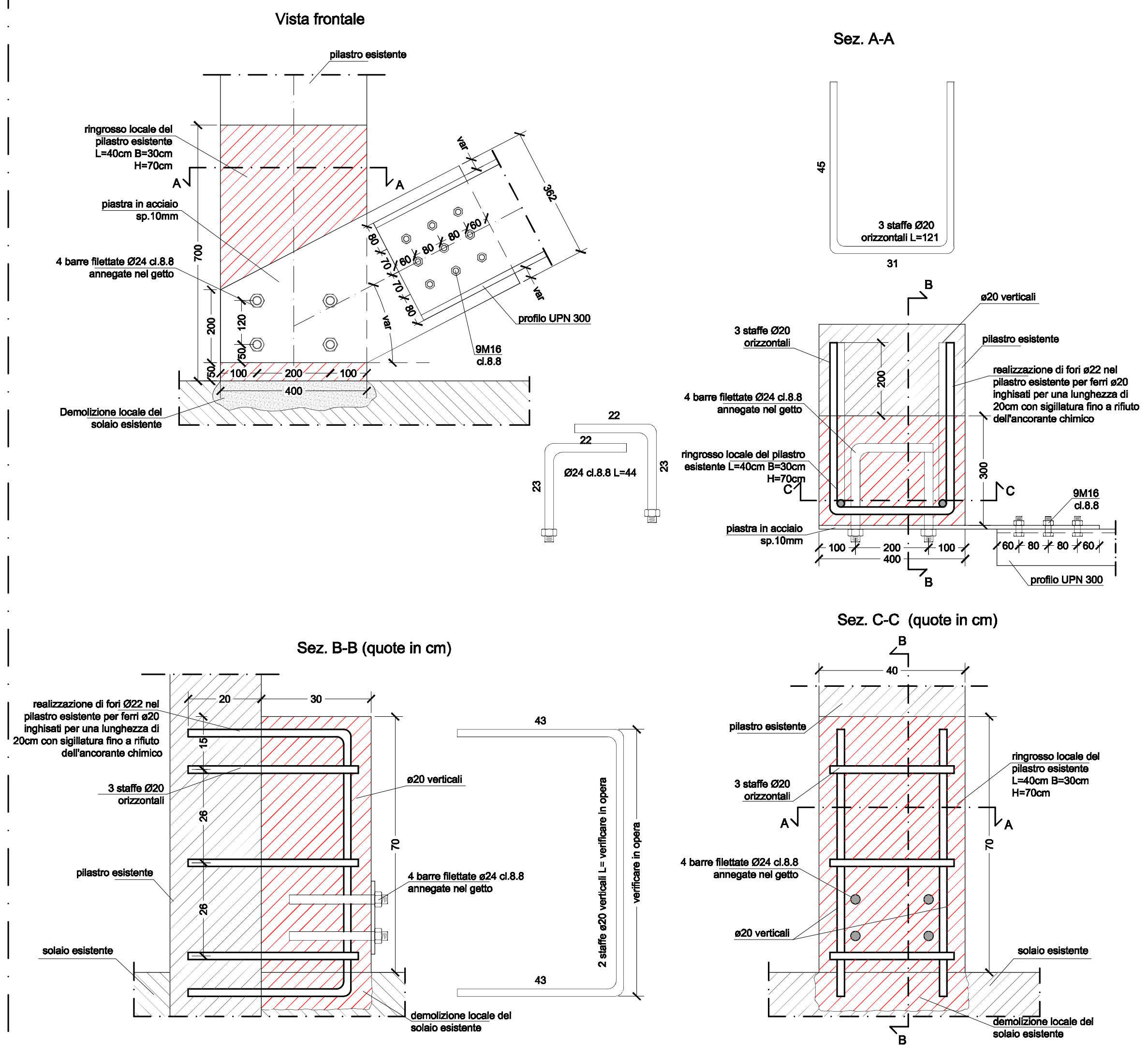
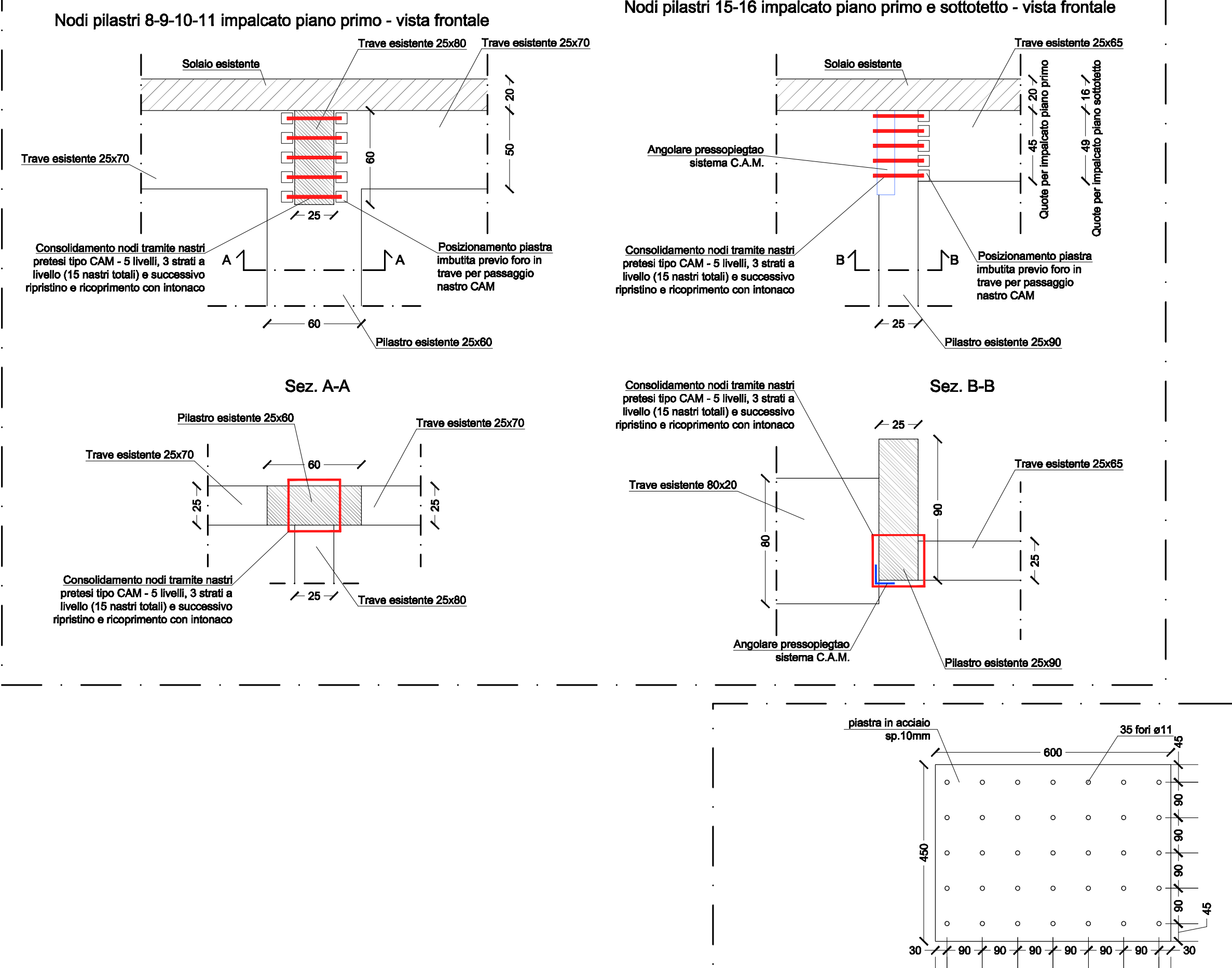


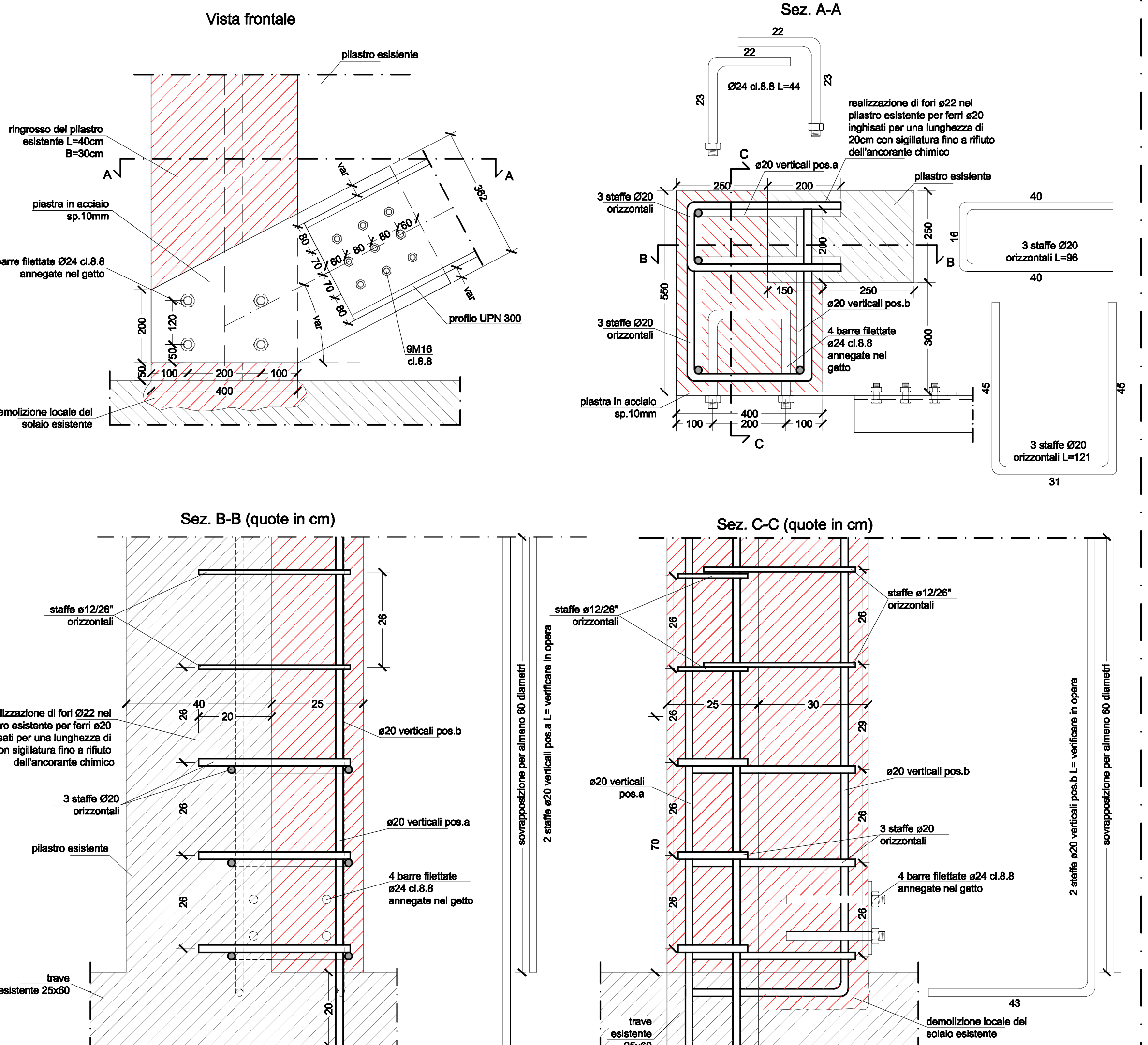
PART. 13/A - Collegamento UPN300 controvento a croce / pilastro esistente - Scala 1:10



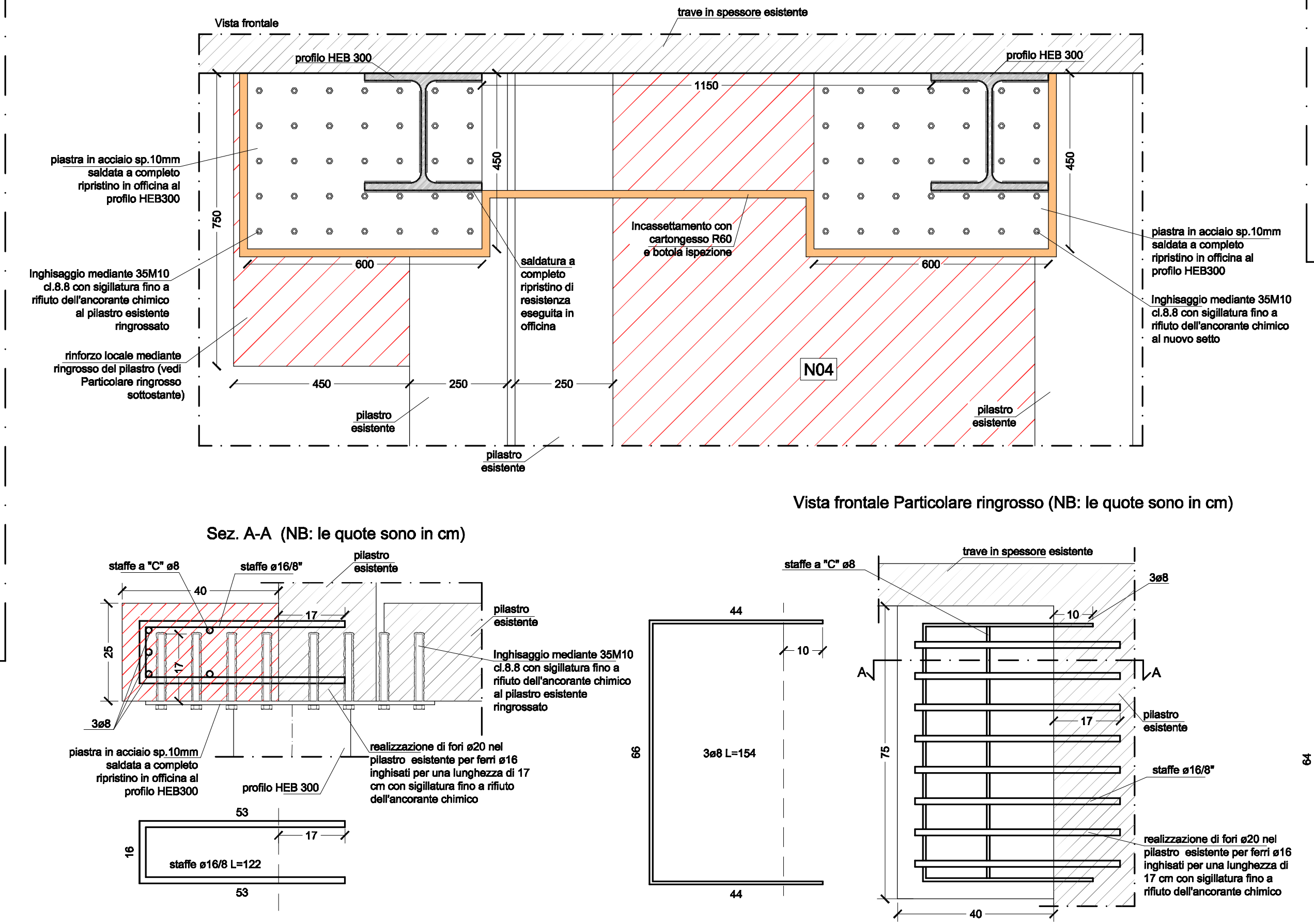
PARTICOLARE - Consolidamento nodi con sistema C.A.M. - Scala 1:25



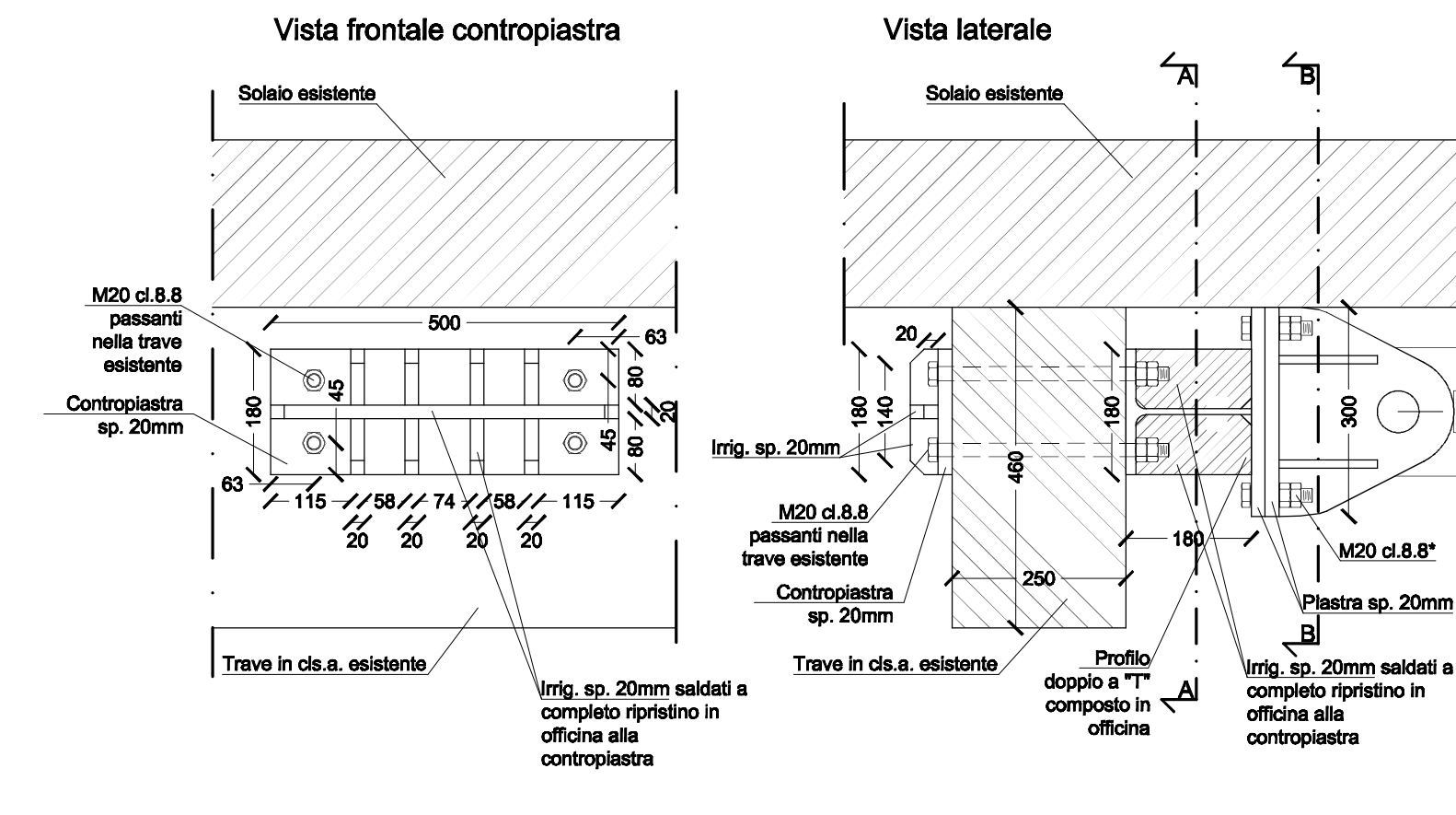
PART. 13/B - Collegamento UPN300 controvento a croce / pilastro esistente - Scala 1:10



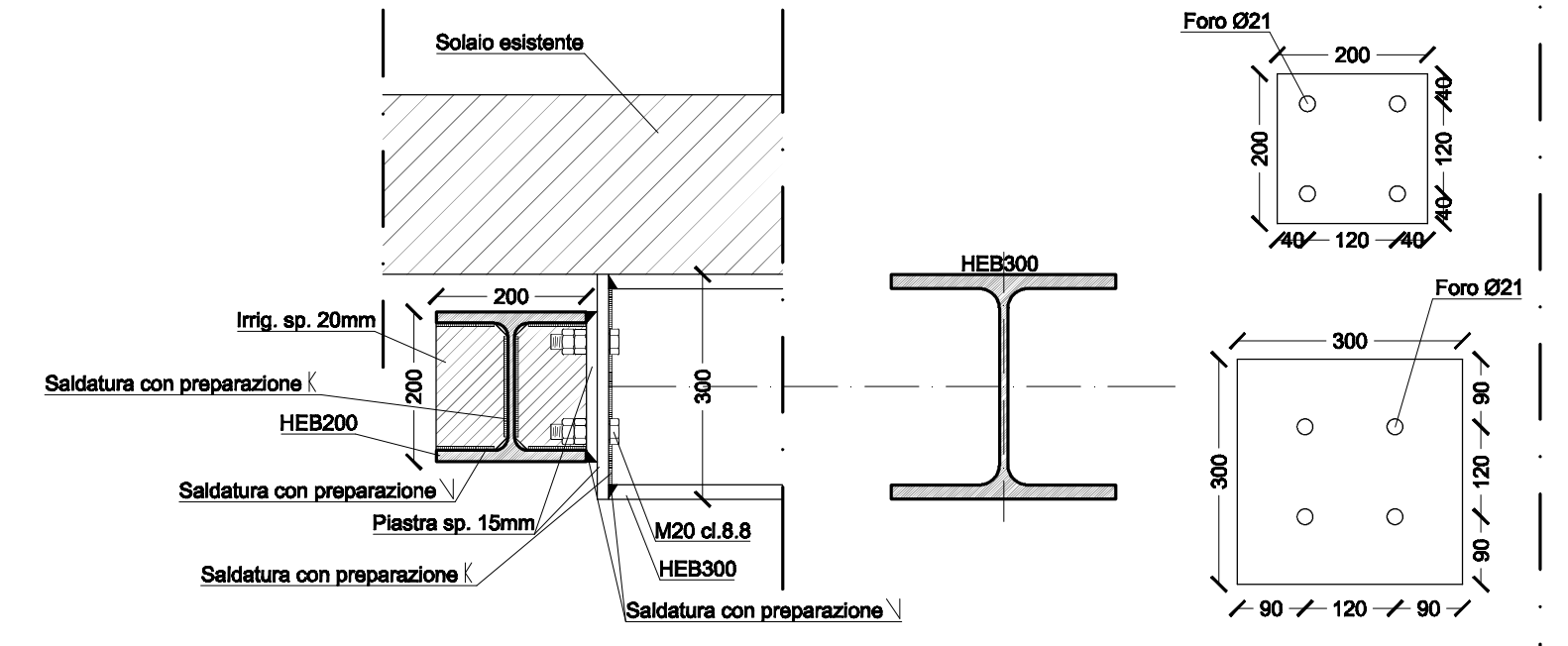
PART. 12 - Ancoraggio HEB300 - Strutture in c.a. esistenti Scala 1:10



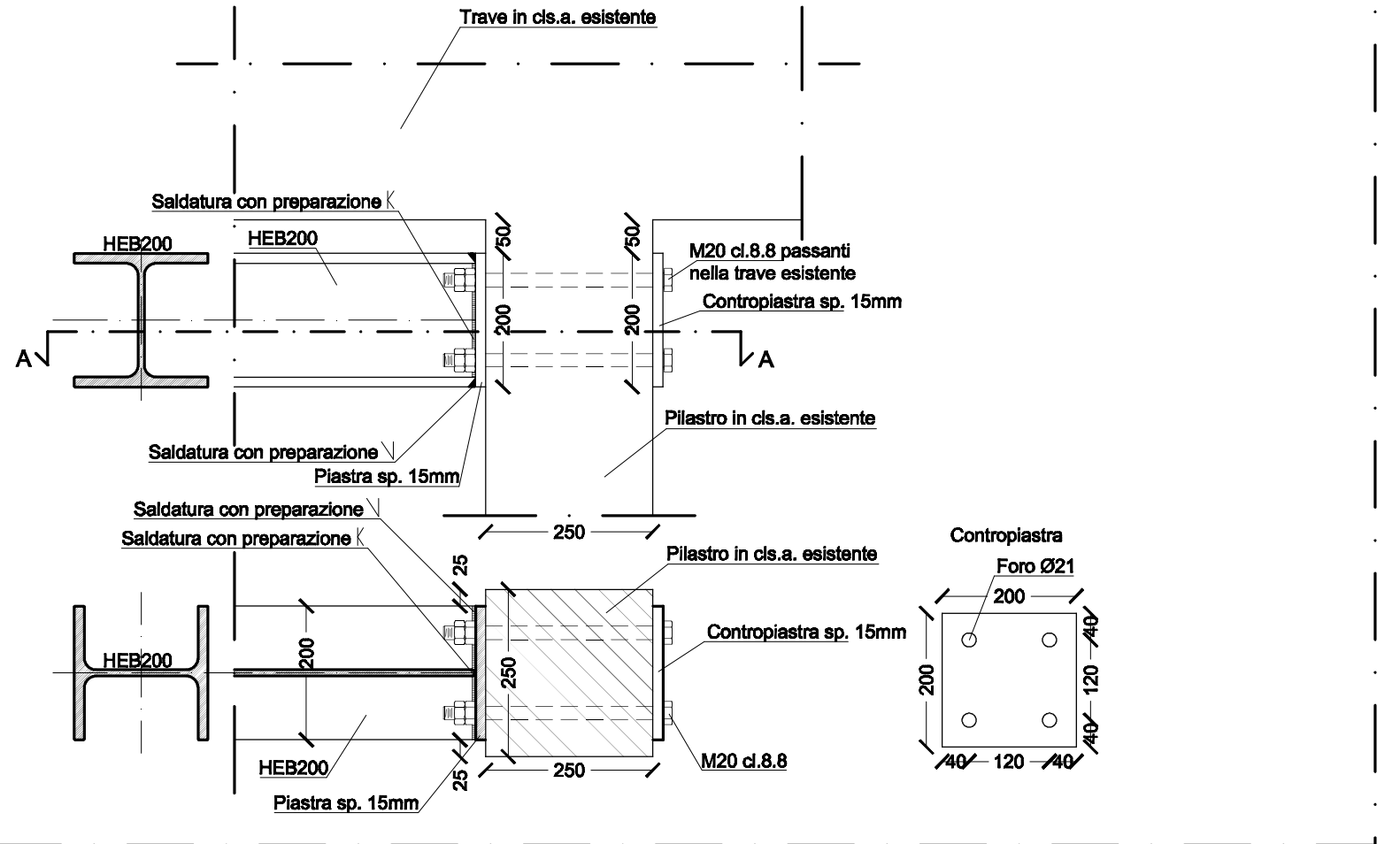
PART. 10/A - Inserimento di dispositivo di vincolo dinamico (shock transmitter) - Scala 1:10



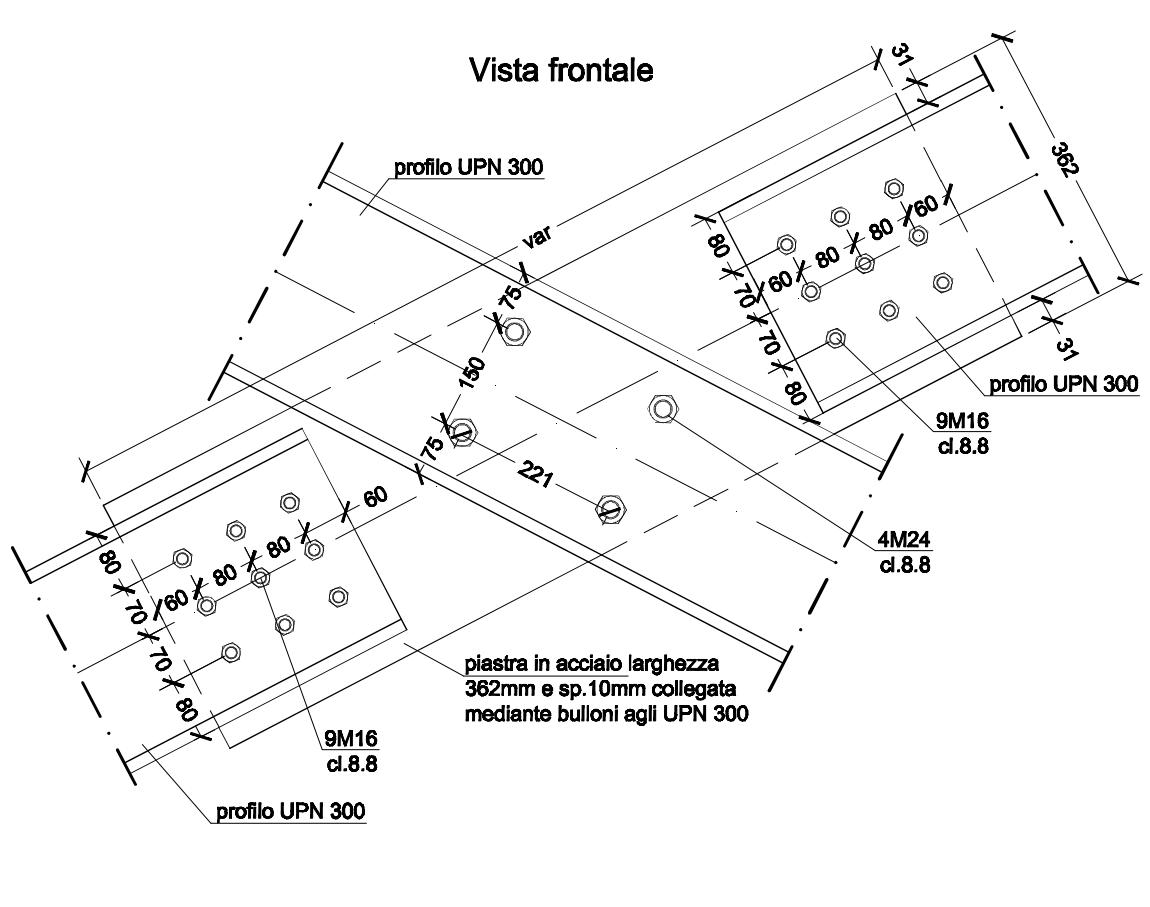
PART. 11/A - Unione tra HEB300 e HEB200 - Scala 1:10



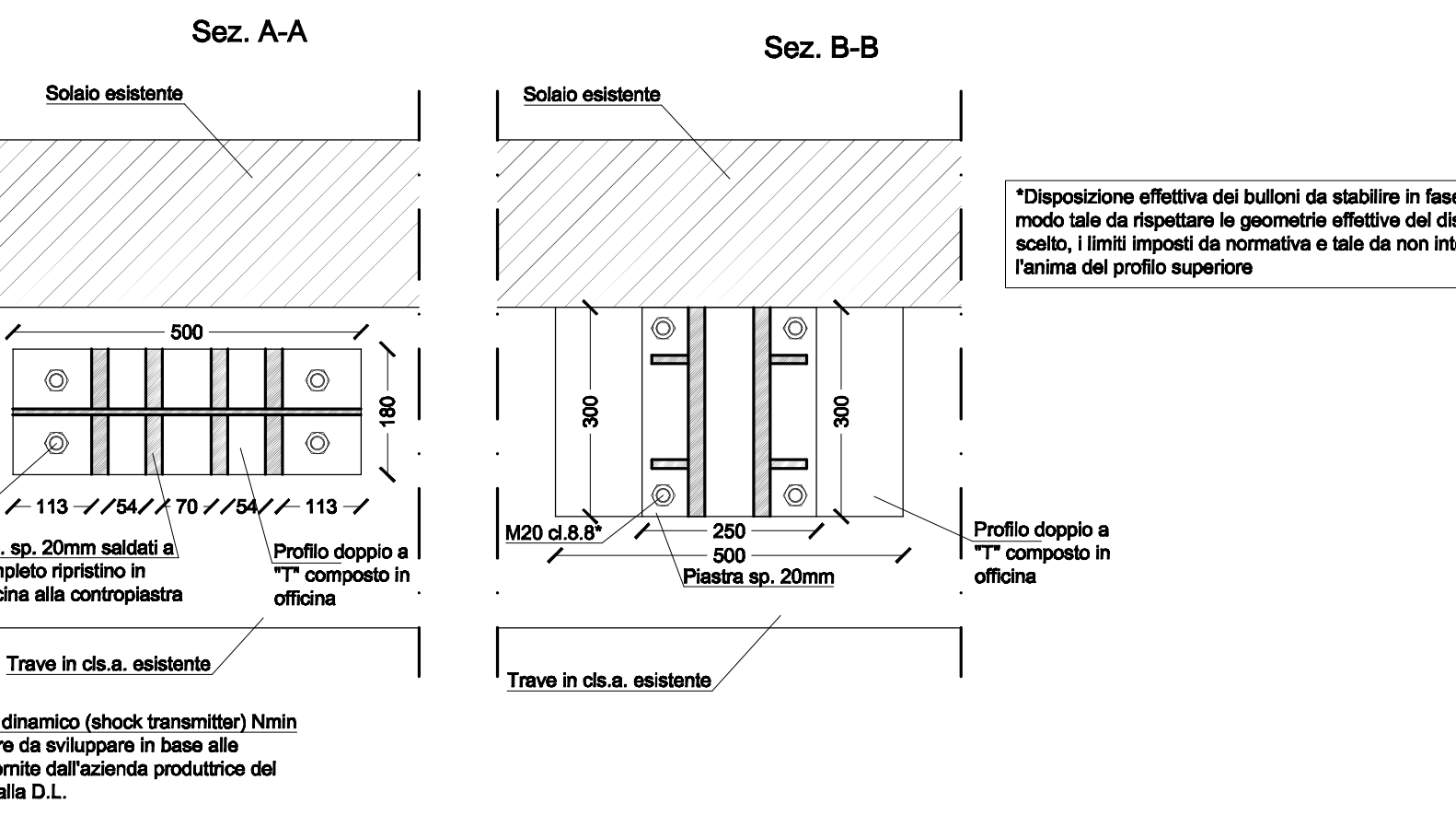
PART. 11/B - Unione tra HEB200 e pilastro esistente - Scala 1:10



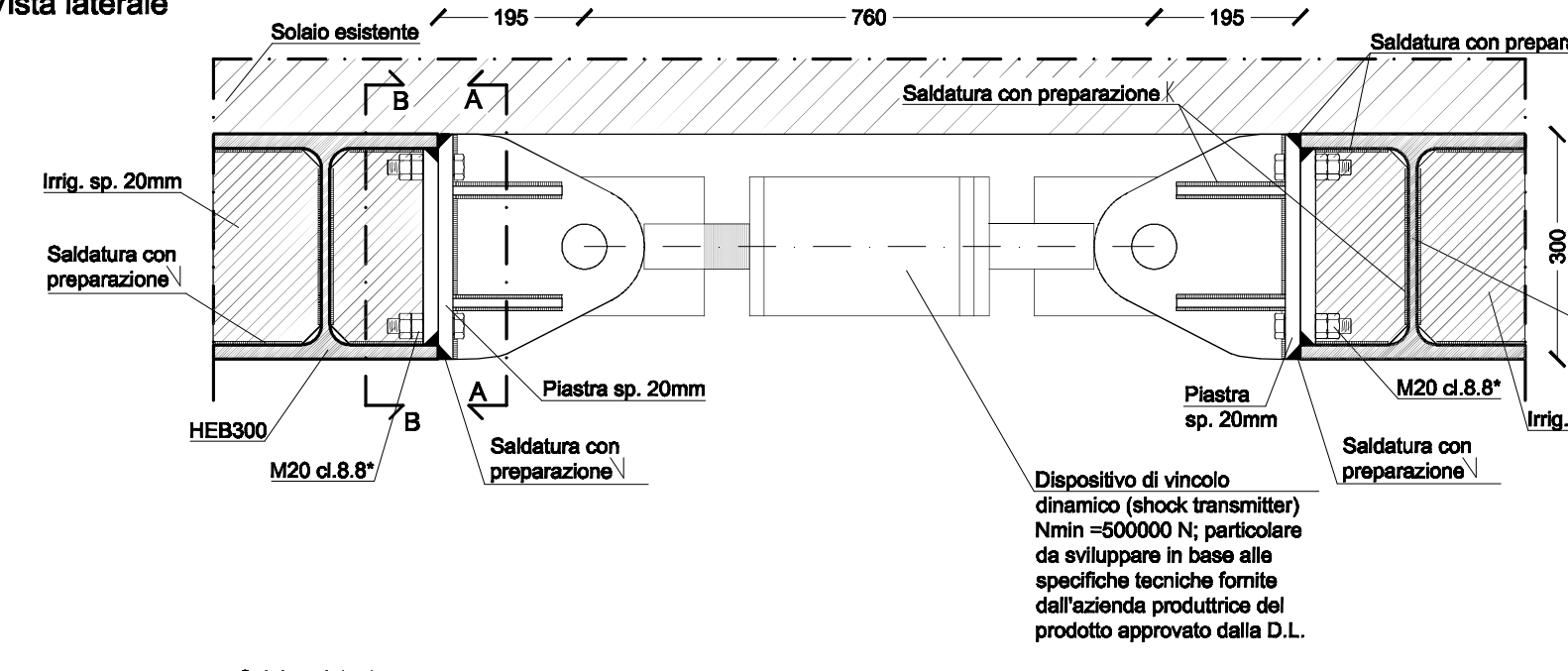
PART. 25 - Collegamento zona intersezione UPN300 - Scala 1:10



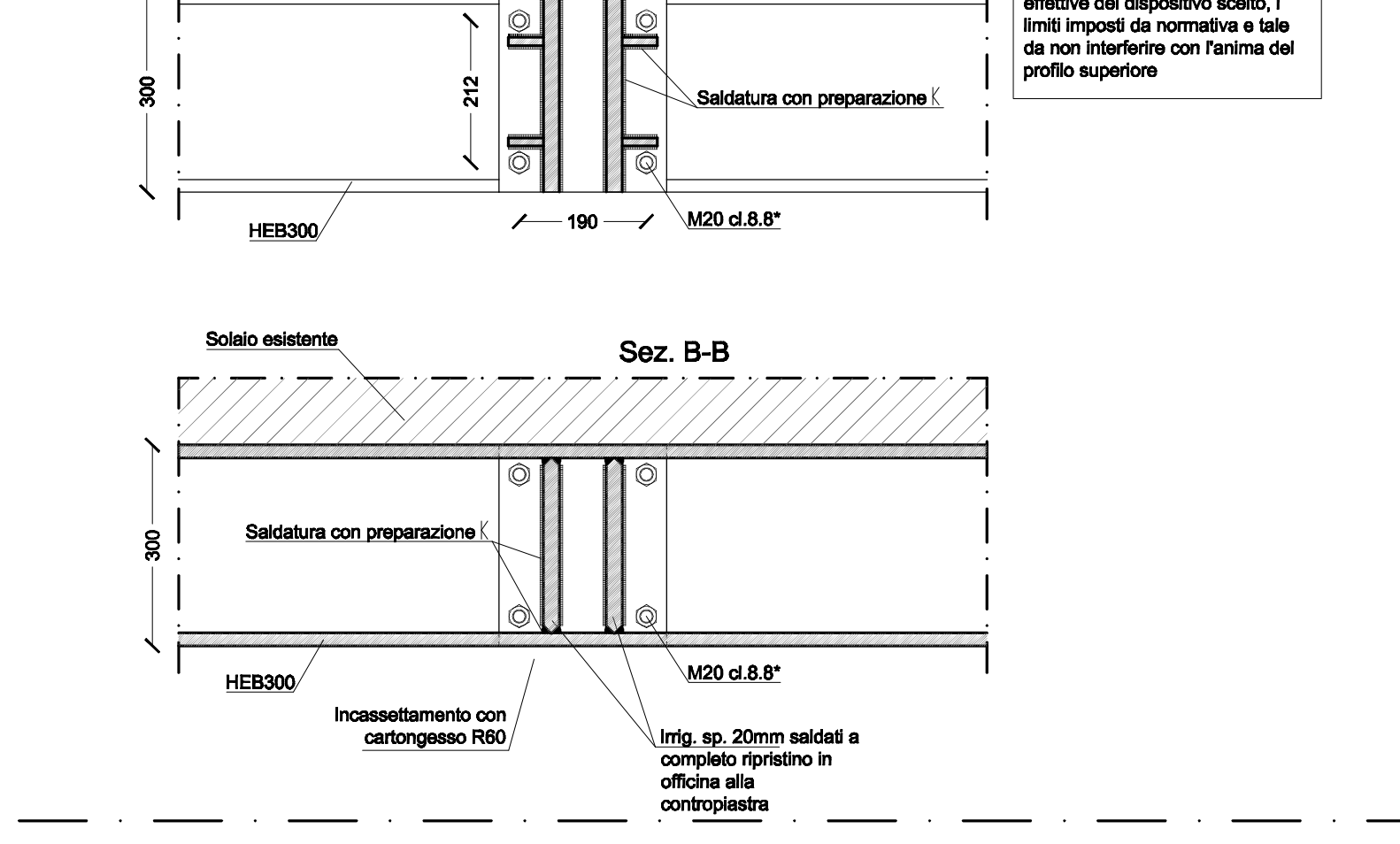
PART. 10 - Inserimento di dispositivo di vincolo dinamico (shock transmitter) - Scala 1:10



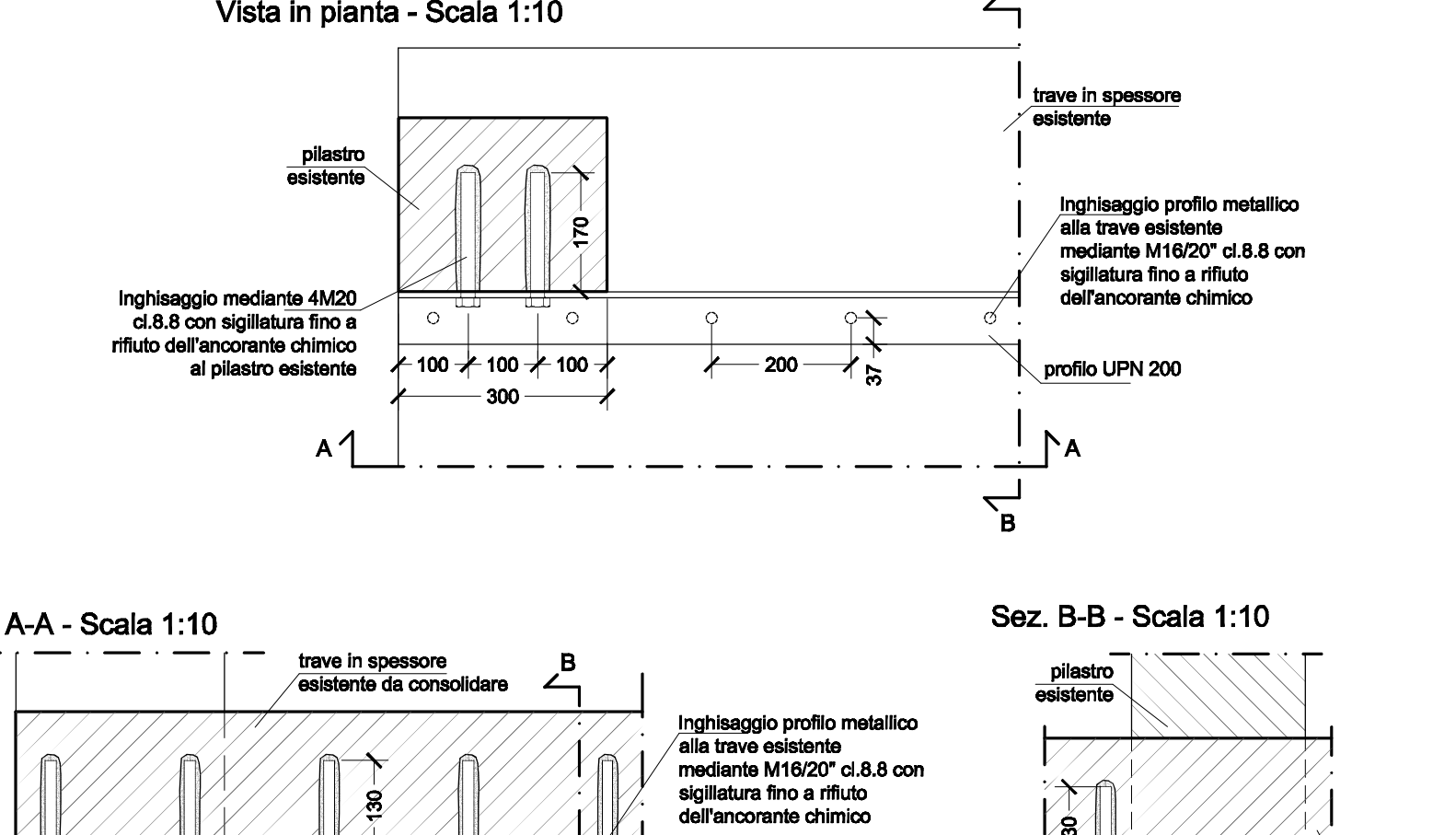
PART. 10 - Inserimento di dispositivo di vincolo dinamico (shock transmitter) - Scala 1:10



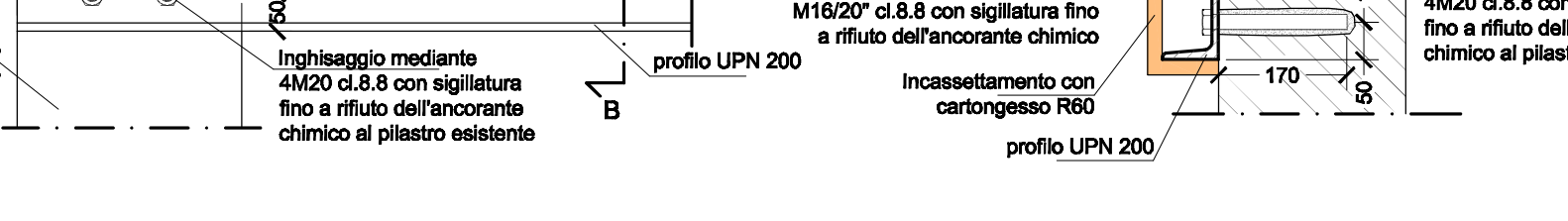
PART. 09 - Consolidamento travate a taglio T209,T309 - Scala 1:10



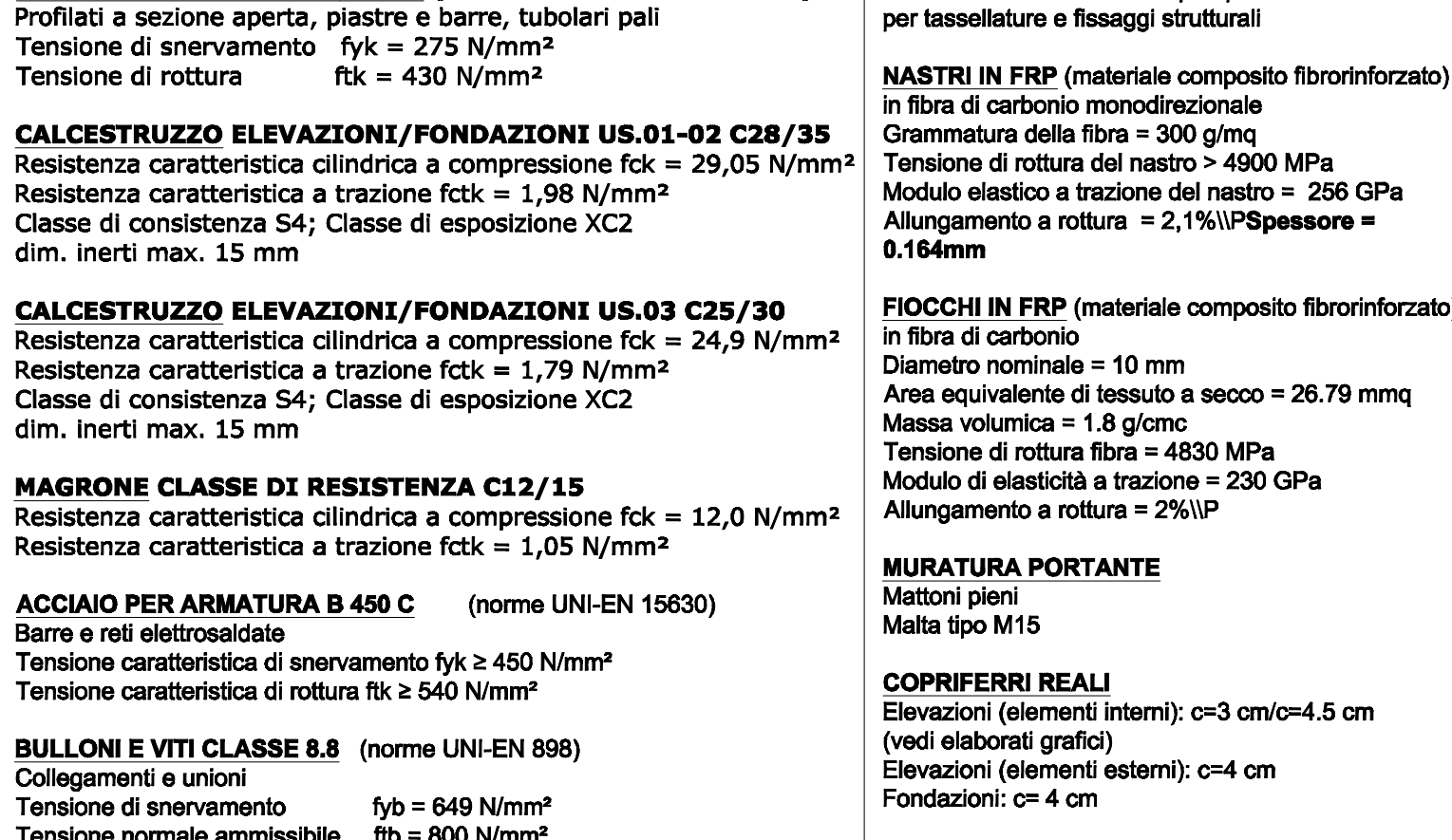
PART. 09 - Consolidamento travate a taglio T209,T309 - Scala 1:10



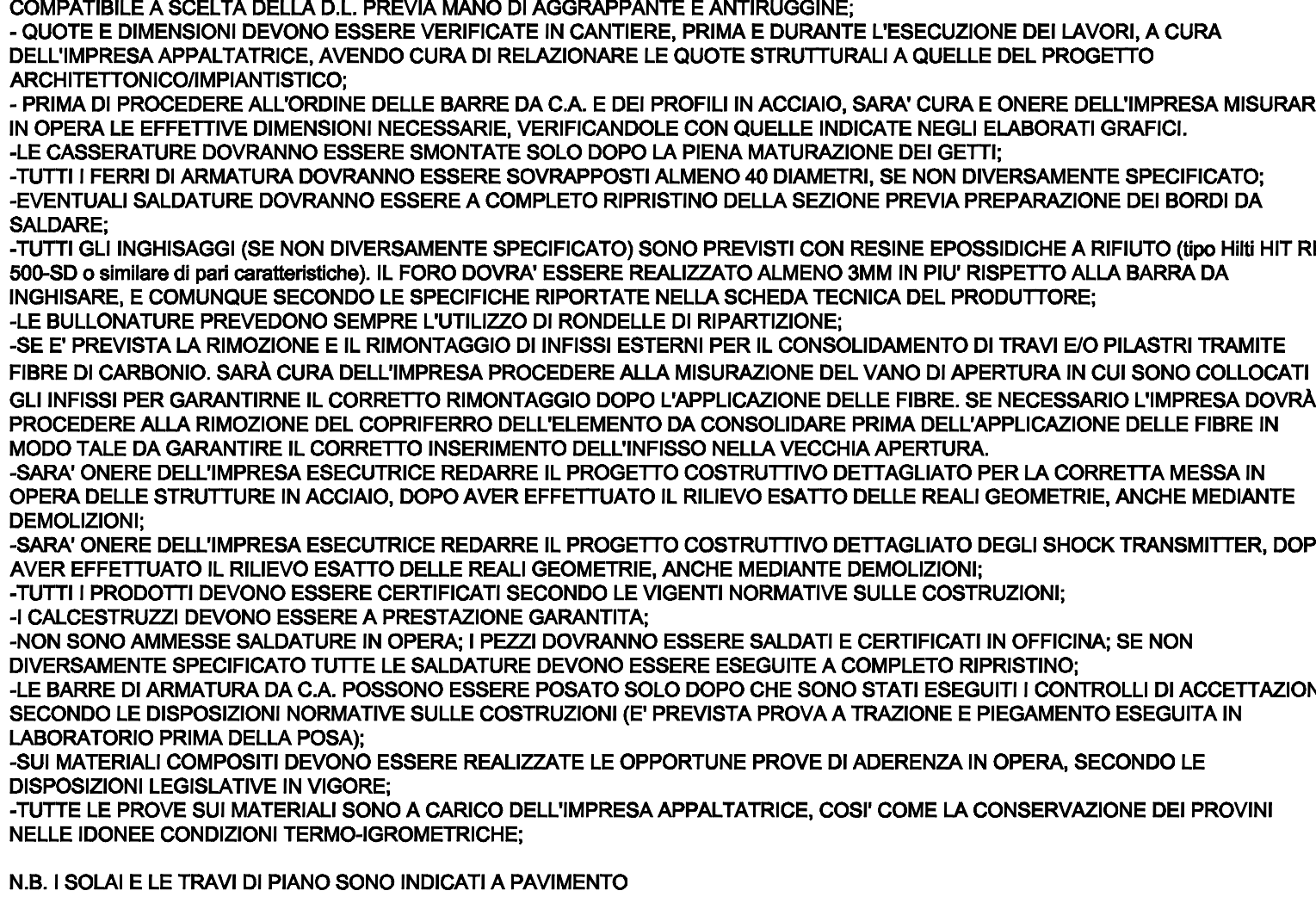
PART. 09 - Consolidamento travate a taglio T209,T309 - Scala 1:10



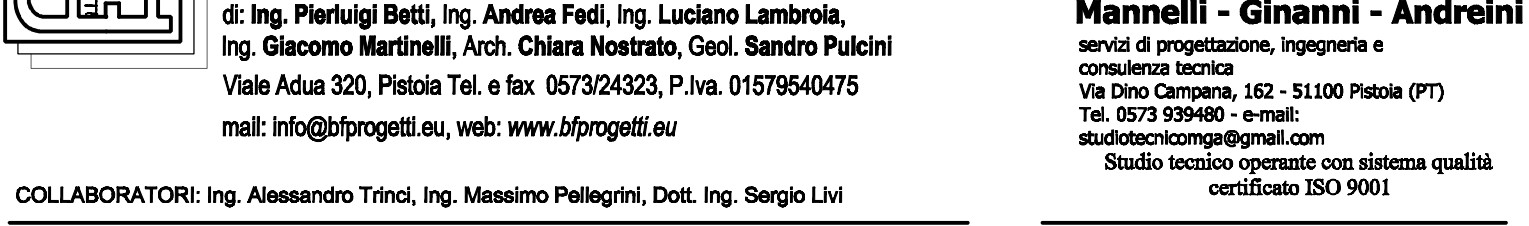
MATERIALI



NOTE



N.B. I SOLAI E LE TRAVI DI PIANO SONO INDICATI A PAVIMENTO



COLLABORATORI: Ing. Alessandro Trinci, Ing. Massimo Pellegrini, Dott. Ing. Sergio Livi

ING. PIERLUIGI BETTI

ING. GIACOMO MARTINELLI

COMUNE DI SAN CASCIANO VAL DI PESA

VAL DI PESA

MIGLIORAMENTO / ADEGUAMENTO SISMICO E ADEGUAMENTO ALLA PREVENZIONE INCENDI DELLA SCUOLA SECONDARIA DI PRIMO GRADO "I. NIEVO" - 1° STRALCIO

PROGETTO ESECUTIVO STRUTTURALE

U.S.01-02 - PARTICOLARI CONTROVENTI, SHOCK TRANSMITTER E CONSOLIDAMENTI (SCALA 1:25, SCALA 1:10)

REV. DESCRIZIONE DATA

NUMERO DI PROTOCOLLO UFFICIO COMPETENTE

AVV. S.10/b

DATA: MAGGIO 2019

Il presente elaborato, ai sensi di legge, non può essere riprodotto o divulgato senza l'espressa autorizzazione dello Studio Associato